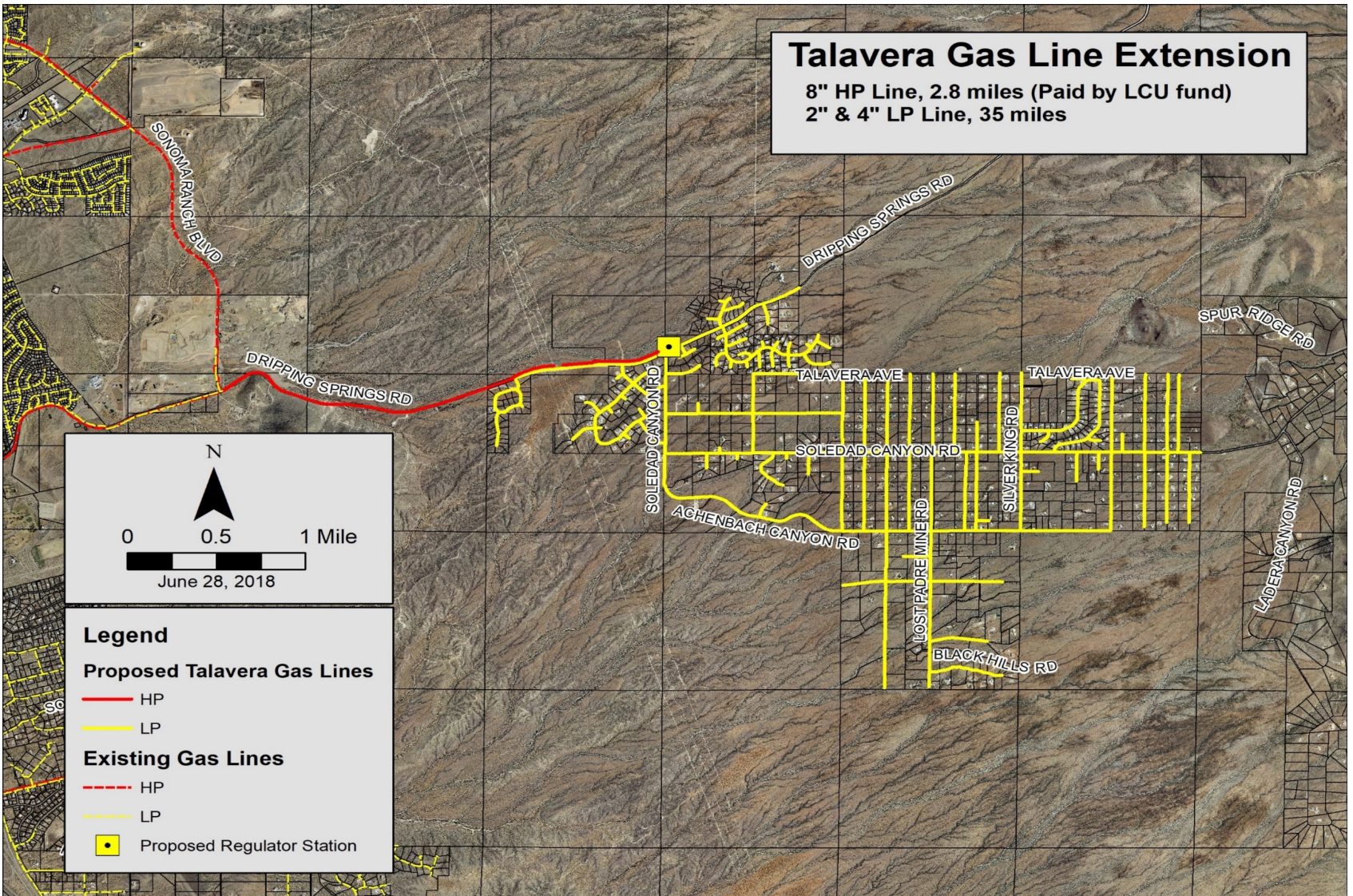
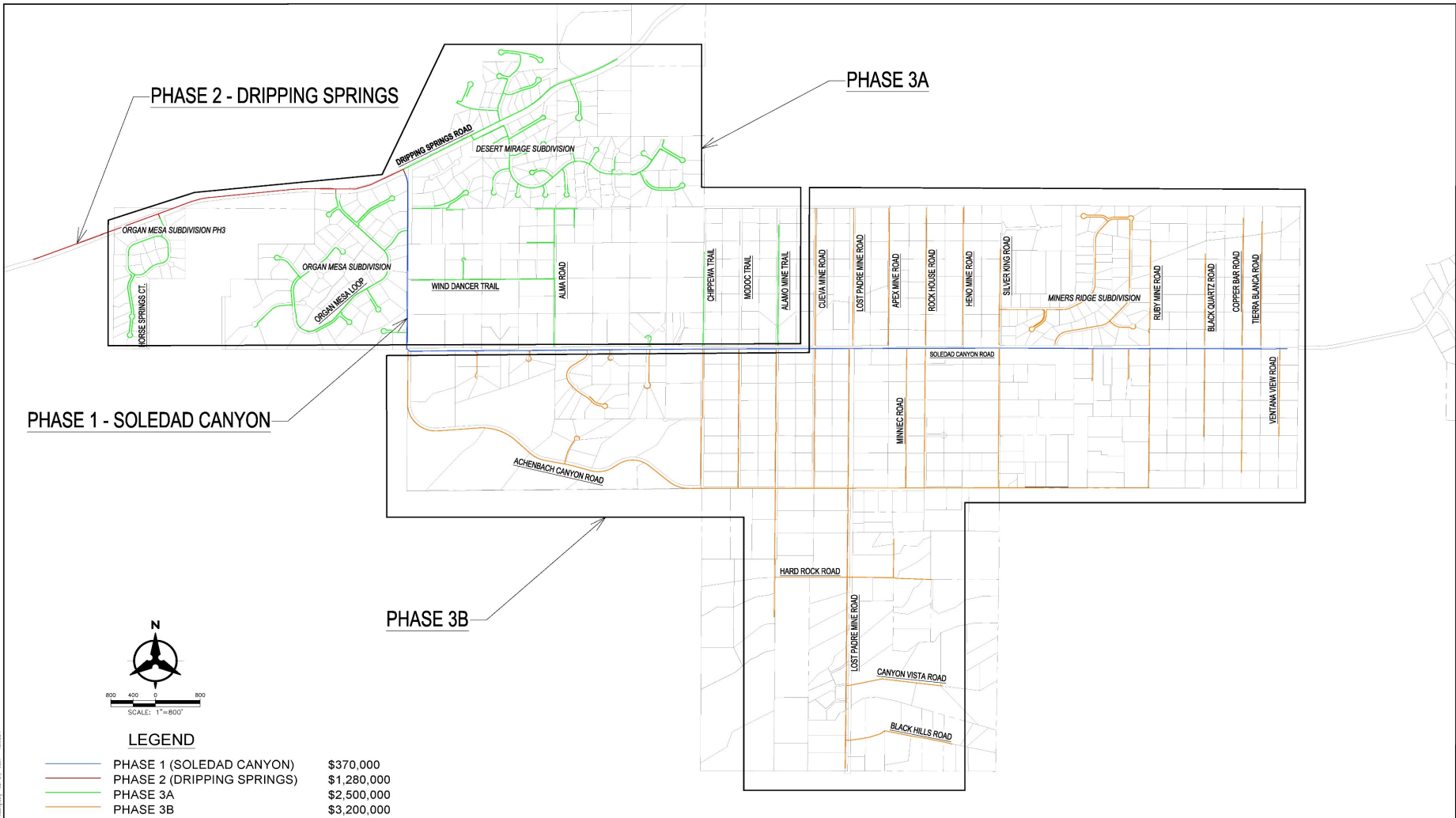


# Talavera Gas Service Project





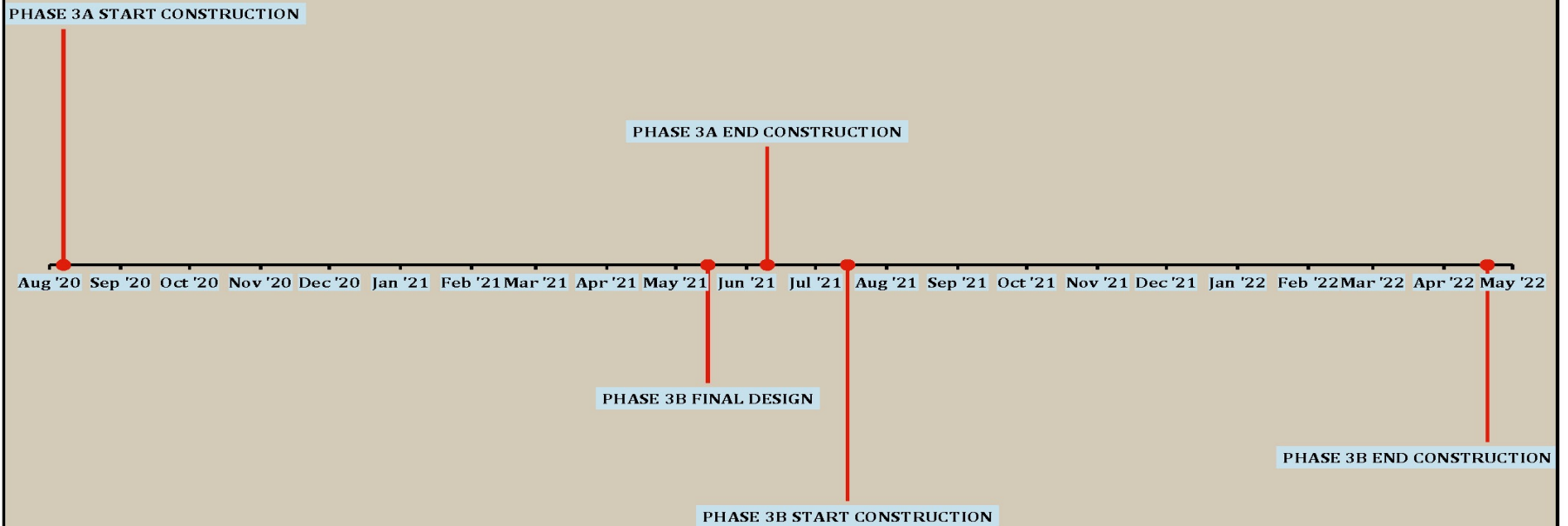
# Talavera Gas Service Project



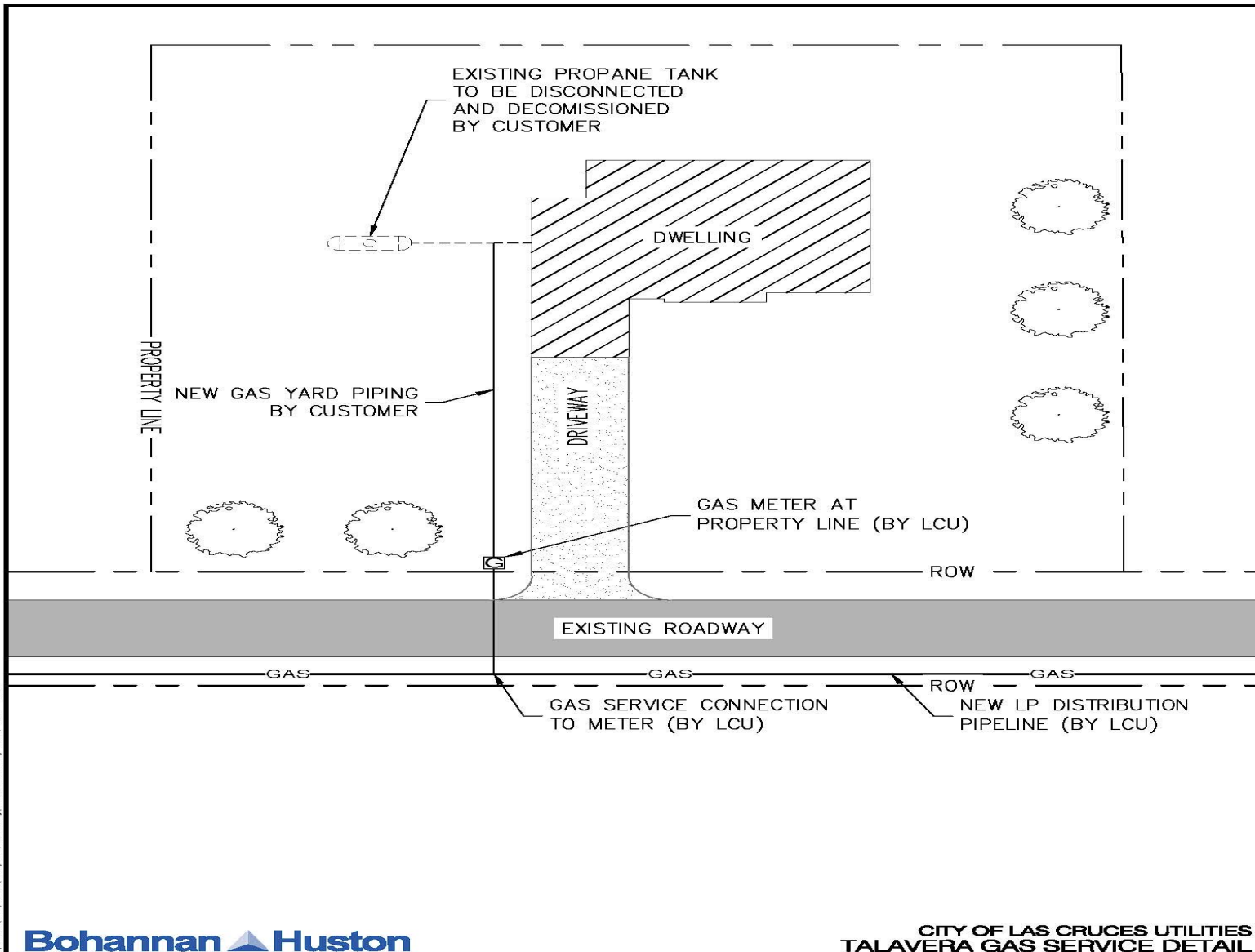
TALAVERA GAS LOW PRESSURE DISTRIBUTION PHASING  
LAS CRUCES UTILITIES

# Talavera Gas Service Project

## LAS CRUCES UTILITIES TALAVERA LOW PRESSURE GAS MARCH 2021



# Talavera Gas Service Project



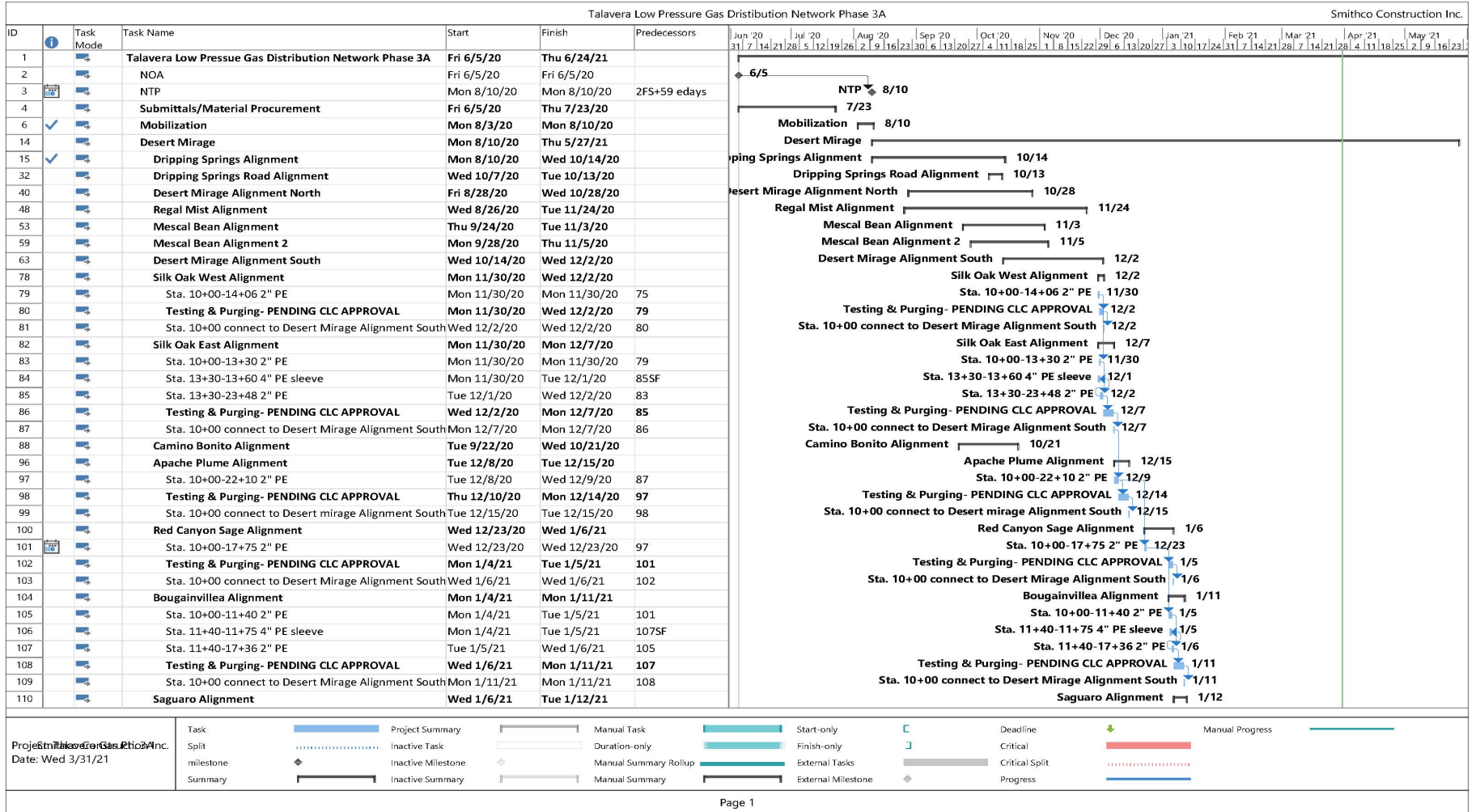
P:\2017\GIS\Correspondence\Meeting\0001\Public Meeting\GIS Service Enhancements - Jun 28, 2016 - 11:05am



# Talavera Gas Service Project

<b>Talavera Gas Service Project</b>		
<b>4/03/2021 (Updated)</b>		
		<b>COST*</b>
Low Pressure Gas Mains and Appurtenances.		\$ 4,857,160
Contingency, 10%		\$ 485,716
NMGRT, 6.75%		\$ 360,644
Owner acquired materials		\$ 76,155
	<b>Total =</b>	<b>\$ 5,779,675</b>
	Number of Parcels in Project Area =	\$ 960
	Per lot cost sharing =	\$ 6,020
	Per lot cost sharing w/\$1,400 credit if qualified per Gas Main Extension Policy =	<b>\$ 4,620</b>
	Equal monthly installments of principal \$4,620 and 3.78% annual interest over 10yrs	\$ 46.29
Applicable New Connection Charges (these cannot be financed)		
Other Costs Customer Side:**		
New Connect		
Yard Piping	\$8.00/FT	(Estimated Cost)
Gas Fixture Conversion	\$300	(Estimated Cost)
* Costs based on Engineers Estimate		
** Cost for customer side services are estimated, contact a plumber for true estimate		

# Talavera Gas Service Project



Project: Talavera Gas Service  
 Date: Wed 3/31/21

Project Summary		Project Summary		Manual Task		Start-only		Deadline		Manual Progress	
Split		Inactive Task		Duration-only		Finish-only		Critical			
Milestone		Inactive Milestone		Manual Summary Rollup		External Tasks		Critical Split			
Summary		Inactive Summary		Manual Summary		External Milestone		Progress			

# Talavera Gas Service Project

Talavera Low Pressure Gas Distribution Network Phase 3A						Smithco Construction Inc.											
ID	Task Mode	Task Name	Start	Finish	Predecessors	Jun '20	Jul '20	Aug '20	Sep '20	Oct '20	Nov '20	Dec '20	Jan '21	Feb '21	Mar '21	Apr '21	May '21
114		Desert Broom Alignment	Thu 1/7/21	Wed 1/13/21													
115		Sta. 10+00-14+77 2" PE	Thu 1/7/21	Mon 1/11/21	111												
116		Testing & Purging- PENDING CLC APPROVAL	Mon 1/11/21	Wed 1/13/21	115												
117		Sta. 10+00 connect to Desert Mirage Alignment South	Wed 1/13/21	Wed 1/13/21	116												
118		Loma Bella Alignment	Mon 1/11/21	Tue 1/19/21													
122		Desert Broom CT Alignment	Thu 1/14/21	Thu 1/21/21													
123		Sta. 10+00-10+84 2" PE	Thu 1/14/21	Thu 1/14/21	119												
124		Sta. 10+84-11+00 4" PE sleeve	Thu 1/14/21	Mon 1/18/21	125SF												
125		Sta. 10+84-14+12 2" PE	Mon 1/18/21	Mon 1/18/21	123												
126		Sta. 14+12-14+42 4" PE sleeve	Thu 1/14/21	Mon 1/18/21	127SF												
127		Sta. 14+12-18+19 2" PE	Mon 1/18/21	Mon 1/18/21	125												
128		Sta. 18+19-19+21 4" PE sleeve	Mon 1/18/21	Tue 1/19/21	129SF												
129		Sta. 18+19-20+51 2" PE	Tue 1/19/21	Tue 1/19/21	127												
130		Testing & Purging- PENDING CLC APPROVAL	Tue 1/19/21	Thu 1/21/21	129												
131		Sta. 10+00 connect to Desert Mirage Alignment South	Thu 1/21/21	Thu 1/21/21	130												
132		Firethorn Alignment	Tue 1/19/21	Tue 1/26/21													
133		Sta. 10+00-18+31 2" Pe	Tue 1/19/21	Wed 1/20/21	129												
134		Testing & Purging- PENDING CLC APPROVAL	Thu 1/21/21	Mon 1/25/21	133												
135		Sta. 10+00 connect to Desert Mirage Alignment South	Tue 1/26/21	Tue 1/26/21	134												
136		Chuparosa Alignment	Thu 1/21/21	Tue 1/26/21													
137		Sta. 10+00-13+52 2" PE	Thu 1/21/21	Thu 1/21/21	133												
138		Testing & Purging- PENDING CLC APPROVAL	Thu 1/21/21	Tue 1/26/21	137												
139		Sta. 10+00 connect to Desert Mirage Alignment South	Tue 1/26/21	Tue 1/26/21	138												
140		Red Yucca Alignment	Thu 1/21/21	Wed 1/27/21													
141		Sta. 10+00-13+56 2" PE	Thu 1/21/21	Thu 1/21/21	137												
142		Testing & Purging- PENDING CLC APPROVAL	Mon 1/25/21	Tue 1/26/21	141												
143		Sta. 10+00 connect to desert Mirage Alignment South	Wed 1/27/21	Wed 1/27/21	142												
144		Driveway & Landscape R&R	Mon 8/10/20	Thu 5/27/21													
145		Organ Mesa Ranch	Mon 1/25/21	Thu 6/24/21													
146		Organ Mesa Loop Alignment	Mon 1/25/21	Tue 2/16/21													
147		sta. 10+00-22+28 2" PE	Mon 1/25/21	Tue 1/26/21	141												
148		sta. 22+28-23+00 4" PE Sleeve	Tue 1/26/21	Wed 1/27/21	149SF												
149		sta. 22+28-25+97 2" PE	Wed 1/27/21	Wed 1/27/21	147												
150		sta. 25+97-26+09 4" PE Sleeve	Tue 1/26/21	Wed 1/27/21	151SF												
151		sta. 25+97-26+73 2" PE	Wed 1/27/21	Wed 1/27/21	149												
152		sta. 26+73-27+23 4" PE Sleeve	Wed 1/27/21	Thu 1/28/21	153SF												
153		sta. 26+73-30+09 2" PE	Thu 1/28/21	Thu 1/28/21	151												
154		sta. 30+09-30+48 4" PE Sleeve	Wed 1/27/21	Thu 1/28/21	155SF												
155		sta. 30+09-32+10 2" PE	Thu 1/28/21	Thu 1/28/21	153												



# Talavera Gas Service Project

Talavera Low Pressure Gas Distribution Network Phase 3A				Smithco Construction Inc.													
ID	Task Mode	Task Name	Start	Finish	Predecessors	Jun '20	Jul '20	Aug '20	Sep '20	Oct '20	Nov '20	Dec '20	Jan '21	Feb '21	Mar '21	Apr '21	May '21
156		sta. 32+10-32+30 4" PE Sleeve	Thu 1/28/21	Mon 2/1/21	157SF												
157		sta. 32+10-36+81 2" PE	Mon 2/1/21	Mon 2/1/21	155												
158		sta. 36+81-37+42 4" PE Sleeve	Thu 1/28/21	Mon 2/1/21	159SF												
159		sta. 36+81-53+40 2" PE	Mon 2/1/21	Wed 2/3/21	157												
160		sta. 53+40-54+22 4" PE Sleeve	Wed 2/3/21	Thu 2/4/21	161SF												
161		sta. 53+40-56+77 2" PE	Thu 2/4/21	Thu 2/4/21	159												
162		sta. 56+77-57+28 4" PE Sleeve	Wed 2/3/21	Thu 2/4/21	163SF												
163		sta. 56+77-58+45 2" PE	Thu 2/4/21	Thu 2/4/21	161												
164		sta. 58+45-59+17 4" PE Sleeve	Thu 2/4/21	Mon 2/8/21	165SF												
165		sta. 58+45-66+75 2" PE	Mon 2/8/21	Tue 2/9/21	163												
166		sta. 66+75-67+60 4" PE Sleeve	Mon 2/8/21	Tue 2/9/21	167SF												
167		sta. 66+75-75+69.39 2" PE	Tue 2/9/21	Wed 2/10/21	165												
168		Testing & Purging- PENDING CLC APPROVAL	Thu 2/11/21	Tue 2/16/21	167												
169		sta. 10+00 connect to ex. main	Tue 2/16/21	Tue 2/16/21	168												
170		Organ Mesa Loop Alignment 2	Thu 2/11/21	Wed 2/17/21													
171		sta. 10+00-21+24.47 2" PE	Thu 2/11/21	Mon 2/15/21	167												
172		Testing & Purging- PENDING CLC APPROVAL	Mon 2/15/21	Wed 2/17/21	171												
173		sta. 10+00 connect to Organ Mesa Loop Alignment	Wed 2/17/21	Wed 2/17/21	172												
174		Organ Mesa Loop Alignment 3	Mon 2/15/21	Mon 2/22/21													
175		sta. 10+00-17+00 2" PE	Mon 2/15/21	Tue 2/16/21	171												
176		sta. 17+00-17+20 4" PE Sleeve	Mon 2/15/21	Tue 2/16/21	177SF												
177		sta. 17+00-17+77.81 2" PE	Tue 2/16/21	Wed 2/17/21	175												
178		Testing & Purging- PENDING CLC APPROVAL	Wed 2/17/21	Mon 2/22/21	177												
179		sta. 10+00 connect to Hembrillo Canyon Alignment	Mon 2/22/21	Mon 2/22/21	178												
180		Organ Mesa Loop Alignment 4	Tue 2/16/21	Mon 2/22/21													
181		sta. 10+00-10+34 4" PE Sleeve	Tue 2/16/21	Wed 2/17/21	182SF												
182		sta. 10+00-12+20.70 2" PE	Wed 2/17/21	Wed 2/17/21	177												
183		Testing & Purging- PENDING CLC APPROVAL	Thu 2/18/21	Mon 2/22/21	182												
184		Lion Den Canyon Alignment	Thu 2/18/21	Thu 2/25/21													
185		sta. 10+00-33+20.54 2" PE	Thu 2/18/21	Wed 2/24/21	182												
186		Testing & Purging- PENDING CLC APPROVAL	Wed 2/24/21	Thu 2/25/21	185												
187		sta. 10+00 connect to Organ Mesa Loop Alignment 4	Thu 2/25/21	Thu 2/25/21	186												
188		Hembrillo Pass Rd. Alignment	Tue 2/23/21	Tue 3/2/21													
189		sta. 10+00-10+42 4" PE Sleeve	Tue 2/23/21	Wed 2/24/21	190SF												
190		sta. 10+00-15+66.65 2" PE	Wed 2/24/21	Thu 2/25/21	185												
191		Testing & Purging- PENDING CLC APPROVAL	Thu 2/25/21	Tue 3/2/21	190												
192		sta. 15+66.65 connect to ex. 2" gas line	Tue 3/2/21	Tue 3/2/21	191												
193		Hembrillo Pass Rd. Alignment 2	Thu 2/25/21	Wed 3/3/21													
194		sta. 10+00-14+17.78 2" PE	Thu 2/25/21	Thu 2/25/21	190												

Project: Talavera Gas Service Project  
 Date: Wed 3/31/21

Task		Project Summary		Manual Task		Start-only		Deadline		Manual Progress	
Split milestone		Inactive Task		Duration-only		Finish-only		Critical		Critical Split	
Summary		Inactive Summary		Manual Summary Rollup		External Tasks		Progress			
				Manual Summary		External Milestone					

# Talavera Gas Service Project

Talavera Low Pressure Gas Distribution Network Phase 3A						Smithco Construction Inc.											
ID	Task Mode	Task Name	Start	Finish	Predecessors	Jun '20	Jul '20	Aug '20	Sep '20	Oct '20	Nov '20	Dec '20	Jan '21	Feb '21	Mar '21	Apr '21	May '21
195		Testing & Purging- PENDING CLC APPROVAL	Mon 3/1/21	Tue 3/2/21	194												
196		sta. 10+00 connect to ex. 4" main	Wed 3/3/21	Wed 3/3/21	195												
197		Ice Canyon Ln. Alignment	Thu 2/25/21	Thu 3/4/21													
198		sta. 10+00-10+50 4" PE Sleeve	Thu 2/25/21	Mon 3/1/21	199SF												
199		sta. 10+00-12+35 2" PE	Mon 3/1/21	Mon 3/1/21	194												
200		sta. 12+35-12+72 4" PE Sleeve	Thu 2/25/21	Mon 3/1/21	201SF												
201		sta. 12+35-14+62 2" PE	Mon 3/1/21	Mon 3/1/21	199												
202		sta. 14+62-14+92 4" PE Sleeve	Mon 3/1/21	Tue 3/2/21	203SF												
203		sta. 14+62-18+23.70 2" PE	Tue 3/2/21	Tue 3/2/21	201												
204		Testing & Purging- PENDING CLC APPROVAL	Tue 3/2/21	Thu 3/4/21	203												
205		Pyramid Peak Alignment	Tue 3/2/21	Wed 3/10/21													
206		sta. 10+00-15+41 2" PE	Tue 3/2/21	Wed 3/3/21	203												
207		sta. 15+41-16+06 4" PE Sleeve	Tue 3/2/21	Wed 3/3/21	208SF												
208		sta. 15+41-24+69.32 2" PE	Wed 3/3/21	Thu 3/4/21	206												
209		Testing & Purging- PENDING CLC APPROVAL	Mon 3/8/21	Tue 3/9/21	208												
210		sta. 10+00 connect to Ice Canyon Ln. Alignment	Wed 3/10/21	Wed 3/10/21	209												
211		Grapevine Canyon Alignment	Thu 3/4/21	Thu 3/11/21													
212		sta. 10+00-10+31 4" PE Sleeve	Thu 3/4/21	Mon 3/8/21	213SF												
213		sta. 10+00-21+48.33 2" PE	Mon 3/8/21	Tue 3/9/21	208												
214		Testing & Purging- PENDING CLC APPROVAL	Wed 3/10/21	Thu 3/11/21	213												
215		Hembrillo Canyon Ct.	Tue 3/9/21	Mon 3/15/21													
216		sta. 10+00-10+47 4" PE Sleeve	Tue 3/9/21	Wed 3/10/21	217SF												
217		sta. 10+00-18+48.15 2" PE	Wed 3/10/21	Wed 3/10/21	213												
218		Testing & Purging- PENDING CLC APPROVAL	Thu 3/11/21	Mon 3/15/21	217												
219		Waterhole Canyon Ct. Alignment	Thu 3/11/21	Tue 3/16/21													
220		sta. 10+00-13+91.04 2" PE	Thu 3/11/21	Thu 3/11/21	217												
221		Testing & Purging- PENDING CLC APPROVAL	Thu 3/11/21	Tue 3/16/21	220												
222		sta. 10+00 connect to Organ Mesa Loop Alignment	Tue 3/16/21	Tue 3/16/21	221												
223		Soledad Canyon Ct. Alignment	Thu 3/11/21	Wed 3/17/21													
224		sta. 10+00-16+96.02 2" PE	Thu 3/11/21	Mon 3/15/21	220												
225		Testing & Purging- PENDING CLC APPROVAL	Mon 3/15/21	Wed 3/17/21	224												
226		sta. 10+00 connect to ex. 2" line	Wed 3/17/21	Wed 3/17/21	225												
227		Driveway and Landscape R&R	Tue 1/26/21	Thu 6/24/21													
228		Organ Mesa Ranch Ph. 3	Thu 4/15/21	Tue 6/15/21													
229		Sheep Springs Rd.	Thu 4/15/21	Thu 4/22/21													
230		sta. 10+00-12+34 2" PE	Mon 4/19/21	Mon 4/19/21	224												
231		sta. 12+34-12+77 4" PE Sleeve	Thu 4/15/21	Mon 4/19/21	232SF												
232		sta. 12+34-13+19 2" PE	Mon 4/19/21	Mon 4/19/21	230												
233		sta. 13+19-13+64 4" PE Sleeve	Mon 4/19/21	Tue 4/20/21	234SF												

# Talavera Gas Service Project

Talavera Low Pressure Gas Distribution Network Phase 3A							Smithco Construction Inc.											
ID	Task Mode	Task Name	Start	Finish	Predecessors		Jun '20	Jul '20	Aug '20	Sep '20	Oct '20	Nov '20	Dec '20	Jan '21	Feb '21	Mar '21	Apr '21	May '21
234		sta. 13+19-13+68 2" PE	Tue 4/20/21	Tue 4/20/21	232													
235		Testing & Purging- PENDING CLC APPROVAL	Tue 4/20/21	Thu 4/22/21	234													
236		sta. 10+00 connect to ex. Main	Thu 4/22/21	Thu 4/22/21	235													
237		Lake Lucero Loop- Alignment	Tue 4/20/21	Thu 4/29/21														
238		sta. 10+00-25+70 2" PE	Tue 4/20/21	Thu 4/22/21	234													
239		sta. 25+70-25+90 4" PE Sleeve	Thu 4/22/21	Mon 4/26/21	240SF													
240		sta. 25+90-33+31 2" PE	Mon 4/26/21	Mon 4/26/21	238													
241		Testing & Purging- PENDING CLC APPROVAL	Tue 4/27/21	Wed 4/28/21	240													
242		sta. 10+00 connect to Sheep Springs Rd. Alignment	Thu 4/29/21	Thu 4/29/21	241													
243		Lake Lucero Loop- Alignment 2	Tue 4/27/21	Tue 5/4/21														
244		sta. 10+00-18+21 2" PE	Tue 4/27/21	Wed 4/28/21	240													
245		sta. 18+21-18+41 4" PE Sleeve	Tue 4/27/21	Wed 4/28/21	246SF													
246		sta. 18+21-18+56.21 2" PE	Wed 4/28/21	Wed 4/28/21	244													
247		Testing & Purging- PENDING CLC APPROVAL	Thu 4/29/21	Mon 5/3/21	246													
248		sta. 10+00 connect to Sheep Springs Rd. Alignment	Tue 5/4/21	Tue 5/4/21	247													
249		Lake Lucero Loop- Alignment 3	Thu 4/29/21	Mon 5/10/21														
250		sta. 10+00-25+80 2" PE	Thu 4/29/21	Tue 5/4/21	246													
251		sta. 17+00????? 4" PE Sleeve??? (sht. C4)	Mon 5/3/21	Tue 5/4/21	253SF													
252		sta. 25+80-26+22 4" PE Sleeve	Mon 5/3/21	Tue 5/4/21	253SF													
253		sta. 25+80-28+04.86 2" PE	Tue 5/4/21	Tue 5/4/21	250													
254		Testing & Purging- PENDING CLC APPROVAL	Wed 5/5/21	Thu 5/6/21	253													
255		sta. 10+00 connect to Horse Springs Ct. Alignment	Mon 5/10/21	Mon 5/10/21	254													
256		Horse Springs Ct.	Tue 5/4/21	Mon 5/17/21														
257		sta. 10+04-10+50 4" PE Sleeve	Tue 5/4/21	Wed 5/5/21	258SF													
258		sta. 10+00-14+68 2" PE	Wed 5/5/21	Wed 5/5/21	253													
259		sta. 14+68-15+09 4" PE Sleeve	Tue 5/4/21	Wed 5/5/21	260SF													
260		sta. 14+68-29+89 2" PE	Wed 5/5/21	Mon 5/10/21	258													
261		sta. 29+89-30+30 4" PE Sleeve	Mon 5/10/21	Tue 5/11/21	262SF													
262		sta. 30+30-35+34.84 2" PE	Tue 5/11/21	Tue 5/11/21	260													
263		Testing & Purging- PENDING CLC APPROVAL	Wed 5/12/21	Thu 5/13/21	262													
264		sta. 10+00 connect to Lake Lucero Loop Alignment	Mon 5/17/21	Mon 5/17/21	263													
265		Driveway and Landscape R&R	Mon 4/19/21	Tue 6/15/21														
266		Alma Road Alignment	Thu 3/11/21	Wed 3/24/21														
267		Sta. 10+00 connect to existing 2"	Mon 3/15/21	Mon 3/15/21	224													
268		Sta. 10+00-22+76 2" PE	Tue 3/16/21	Wed 3/17/21	267													
269		Sta. 22+76-28+29 4" PE sleeve	Tue 3/16/21	Wed 3/17/21	270SF													
270		Sta. 22+76-36+96 2" PE	Wed 3/17/21	Thu 3/18/21	268													
271		Testing & Purging- PENDING CLC APPROVAL	Mon 3/22/21	Tue 3/23/21	270													
272		Sta. 35+96 connect to Talavera Road Alignment	Wed 3/24/21	Wed 3/24/21	271													

Project: Talavera Gas Service Project  
 Date: Wed 3/31/21

Task		Project Summary		Manual Task		Start-only		Finish-only		Critical		Manual Progress		Progress
Split milestone		Inactive Task		Duration-only		Finish-only		Manual Summary Rollup		External Tasks		Critical Split		
Summary		Inactive Summary		Manual Summary		External Milestone								



# Talavera Gas Service Project

Talavera Low Pressure Gas Distribution Network Phase 3A						Smithco Construction Inc.											
ID	Task Mode	Task Name	Start	Finish	Predecessors	Jun '20	Jul '20	Aug '20	Sep '20	Oct '20	Nov '20	Dec '20	Jan '21	Feb '21	Mar '21	Apr '21	May '21
273	🚧	Driveway and Landscape R&R	Thu 3/11/21	Mon 3/22/21													
274	🚧	Wind Dancer Alignment	Wed 3/17/21	Mon 3/29/21													
275	🚧	Sta. 10+00-35+55 2" PE	Mon 3/22/21	Mon 3/22/21	270												
276	🚧	Sta. 35+55 connect to Alma Road Alignment	Tue 3/23/21	Tue 3/23/21	275												
277	🚧	Testing & Purging- PENDING CLC APPROVAL	Wed 3/24/21	Thu 3/25/21	276												
278	🚧	Sta. 10+00 connect to existing 2"	Mon 3/29/21	Mon 3/29/21	277												
279	🚧	Driveway and Landscape R&R	Wed 3/17/21	Thu 3/25/21													
280	🚧	Roman Alignment	Thu 3/18/21	Thu 3/25/21													
281	🚧	Sta. 10+00-14+87 2" PE	Tue 3/23/21	Tue 3/23/21	275												
282	🚧	Testing & Purging- PENDING CLC APPROVAL	Tue 3/23/21	Thu 3/25/21	281												
283	🚧	Sta. 10+00 connect to Alma Road Alignment	Thu 3/25/21	Thu 3/25/21	282												
284	🚧	Driveway and Landscape R&R	Thu 3/18/21	Wed 3/24/21													
285	🚧	Talavera Avenue Alignment	Mon 3/22/21	Mon 3/29/21													
286	🚧	Sta. 10+00-17+56 2" PE	Tue 3/23/21	Wed 3/24/21	281												
287	🚧	Testing & Purging- PENDING CLC APPROVAL	Wed 3/24/21	Mon 3/29/21	286												
288	🚧	Driveway and Landscape R&R	Mon 3/22/21	Wed 3/24/21													
289	🚧	Desert Walk Alignment	Tue 3/23/21	Tue 3/30/21													
290	🚧	Sta. 10+00-13+52 2" PE	Wed 3/24/21	Wed 3/24/21	286												
291	🚧	Testing & Purging- PENDING CLC APPROVAL	Thu 3/25/21	Mon 3/29/21	290												
292	🚧	Sta. 10+00 connect to Talavera Ave. Alignment	Tue 3/30/21	Tue 3/30/21	291												
293	🚧	Driveway and Landscape R&R	Tue 3/23/21	Thu 3/25/21													
294	🚧	Camino Leon Ct. Alignment North (Sta. 10+00-13+12 2" PE)	Thu 3/25/21	Mon 3/29/21	290												
295	🚧	Testing & Purging- PENDING CLC APPROVAL	Tue 3/30/21	Wed 3/31/21	294												
296	🚧	Driveway and Landscape R&R	Tue 3/23/21	Thu 3/25/21													
297	🚧	Luna Sereno Alignment (Sta. 10+00-14+87 2" PE)	Tue 3/30/21	Wed 3/31/21	294												
298	🚧	Testing & Purging- PENDING CLC APPROVAL	Thu 4/1/21	Mon 4/5/21	297												
299	🚧	Driveway and Landscape R&R	Wed 3/24/21	Mon 3/29/21													
300	🚧	Chippewa Trail Alignment North	Thu 4/1/21	Thu 4/8/21	297												
301	🚧	Sta. 10+00-27+55 2" PE	Thu 4/1/21	Mon 4/5/21	297												
302	🚧	Sta. 27+55 connect to existing 2"	Mon 4/5/21	Mon 4/5/21	301												
303	🚧	Testing & Purging- PENDING CLC APPROVAL	Tue 4/6/21	Wed 4/7/21	302												
304	🚧	Driveway and Landscape R&R	Thu 4/1/21	Thu 4/8/21													
305	🚧	Alamo Mine Road Alignment North	Mon 4/12/21	Tue 4/20/21	300												
306	🚧	Sta. 10+00-32+57 2" PE	Mon 4/12/21	Wed 4/14/21													
307	🚧	Sta. 32+57 connect to existing 2"	Wed 4/14/21	Wed 4/14/21	306												
308	🚧	Testing & Purging- PENDING CLC APPROVAL	Thu 4/15/21	Mon 4/19/21	307												
309	🚧	Driveway and Landscape R&R	Mon 4/12/21	Tue 4/20/21													
310	🚧	Substantial Completion	Mon 4/19/21	Mon 4/19/21	308												
311	🚧	Final Completion	Wed 5/19/21	Wed 5/19/21	310FS+30 days												

Project: Talavera Gas Service  
 Date: Wed 3/31/21

Task		Project Summary		Manual Task		Start-only		Deadline		Manual Progress
Split		Inactive Task		Duration-only		Finish-only		Critical		Critical Split
Milestone		Inactive Milestone		Manual Summary Rollup		External Tasks		Progress		
Summary		Inactive Summary		Manual Summary		External Milestone				

